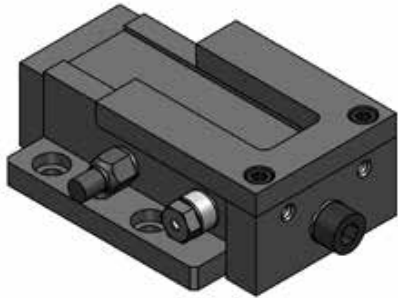
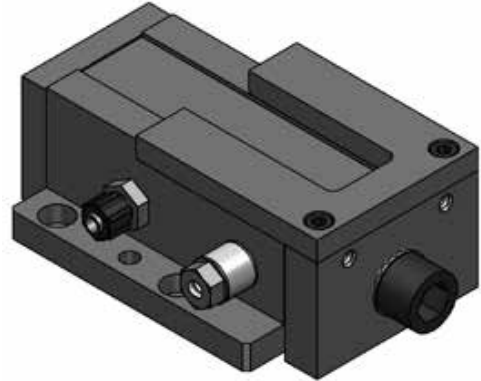




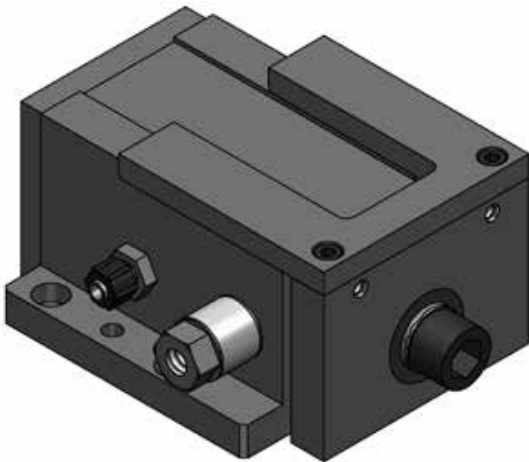
SP-ER AIR SCRAP REMOVER



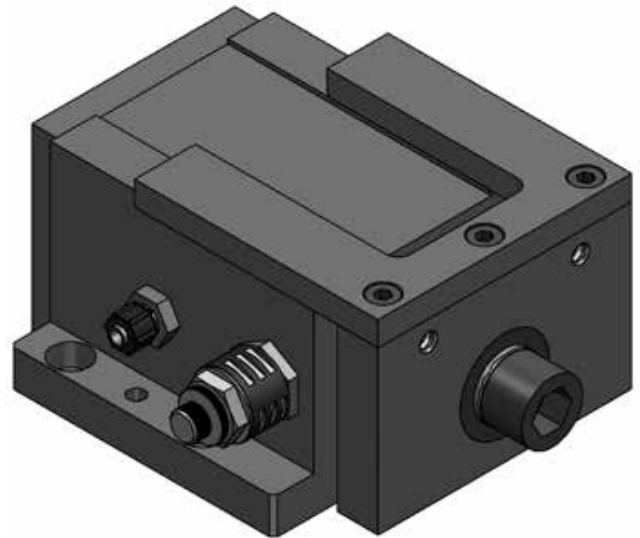
SP-ER 3



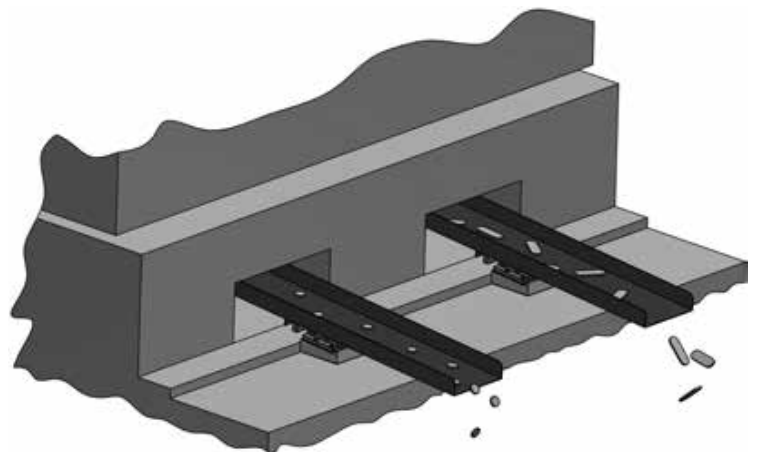
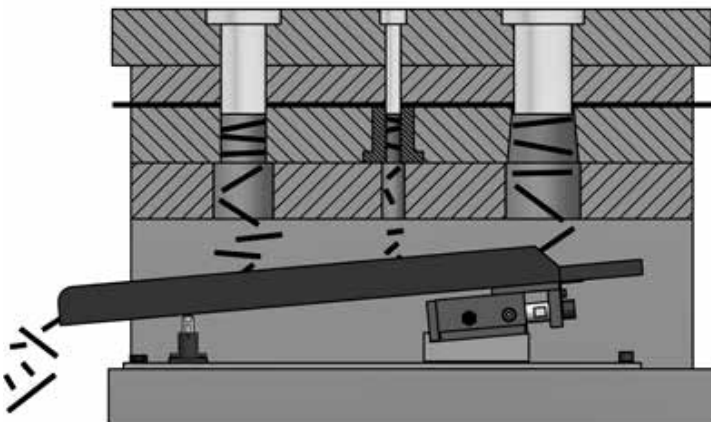
SP-ER 5



SP-ER 7



SP-ER 9



SP-ER 3

Air Scrap Remover



Technical drawing of the SP-ER 3 Air Scrap Remover. Dimensions include: 44, 16, 38, 2 x M6, 80, 4 x Ø14, 48, 38, 5, 10, 38.5±0.02, 41, 39, 4 x M10, 14, 49, 2 x Ø8 H7, 90, 70±0.02, 70, 12, 95, 12.6, 128.

Inset drawing shows a detail of a component with dimensions: G1/8", ID Ø6.

Ordering information table:

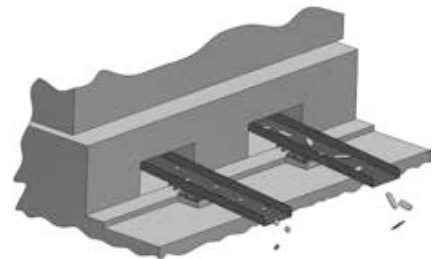
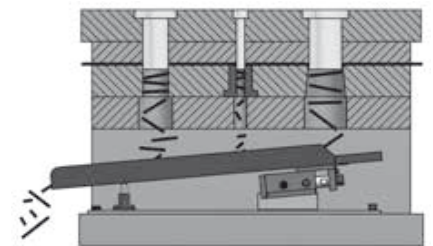
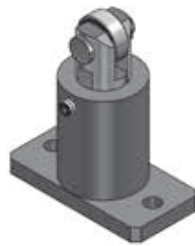
ENG	ORDER
DEU	BESTELL
FRA	COMMANDE
ITA	ORDINE
ESP	PEDIDO
POR	PEDIDO

Product name: **SP-ER 3**

HOLDER

Technical drawing of the Holder component. Dimensions include: Ø25, L1, 5, Ø5,5, 25, 38, 50.

ORDER	S (mm)	L1 Min. (mm)	L1 Max. (mm)
ER - 12	12.5	39.5	52
ER - 25	25	52	77
ER - 50	50	77	127



AIR	Smax = 30 mm	∠ min = 6°	Pmin (20°C) bar psi 4 58	Pmax (20°C) bar psi 6 87	Tmin °C °F 0 32	Tmax °C °F 60 140	Kg.max = 6 Kg.



SP-ER 5

Air Scrap Remover

G1/4" ID Ø6

	ENG ORDER DEU BESTELL FRA COMMANDE ITA ORDINE ESP PEDIDO POR PEDIDO	<p>SP-ER 5</p>
--	--	-----------------------

SP-ER 5

HOLDER

ORDER	S (mm)	L1 Min. (mm)	L1 Max. (mm)
ER - 12	12.5	39.5	52
ER - 25	25	52	77
ER - 50	50	77	127

			 Pmin (20°C)	 Pmax (20°C)	 Tmin	 Tmax	
AIR	Smax = 33 mm	∠ min = 6°	bar psi 4 58	bar psi 6 87	°C °F 0 32	°C °F 60 140	Kg.max = 14 Kg.

SP-ER 7

Air Scrap Remover



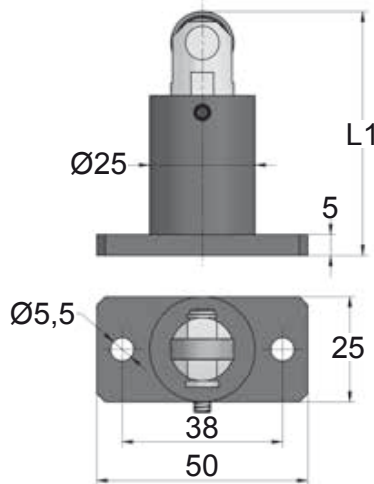
G1/4" ID Ø6

ENG	ORDER
DEU	BESTELL
FRA	COMMANDE
ITA	ORDINE
ESP	PEDIDO
POR	PEDIDO

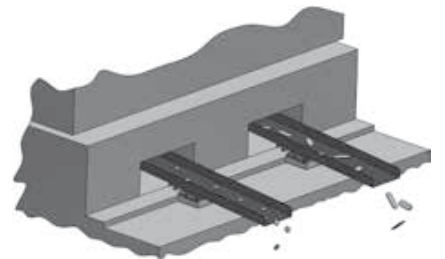
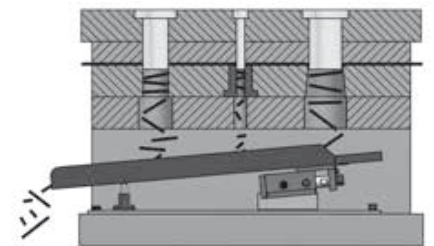
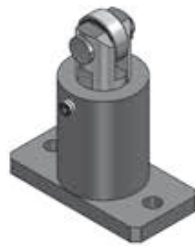
SP-ER 7

SP-ER 7

HOLDER



ORDER	S (mm)	L1 Min. (mm)	L1 Max. (mm)
ER - 12	12.5	39.5	52
ER - 25	25	52	77
ER - 50	50	77	127



AIR	Smax = 20 mm	∠ min = 6°	Pmin (20°C) bar psi 4 58	Pmax (20°C) bar psi 6 87	Tmin °C °F 0 32	Tmax °C °F 60 140	Kg.max = 36 Kg.



SP-ER 9

Air Scrap Remover

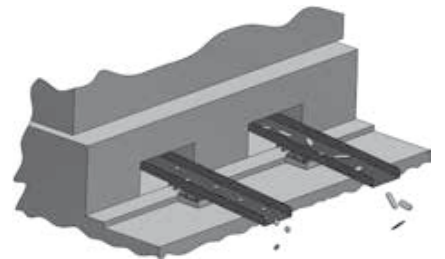
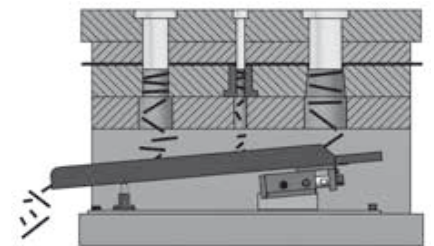
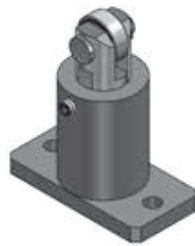
	ENG	ORDER	
	DEU	BESTELL	
	FRA	COMMANDE	
	ITA	ORDINE	
	ESP	PEDIDO	
POR	PEDIDO		

SP-ER 9

SP-ER 9

HOLDER

ORDER	S (mm)	L1 Min. (mm)	L1 Max. (mm)
ER - 12	12.5	39.5	52
ER - 25	25	52	77
ER - 50	50	77	127



AIR	Smax = 28 mm	∠ min = 6°	Pmin (20°C) bar psi 4 58	Pmax (20°C) bar psi 6 87	Tmin °C °F 0 32	Tmax °C °F 60 140	Kg.max = 56 Kg.

